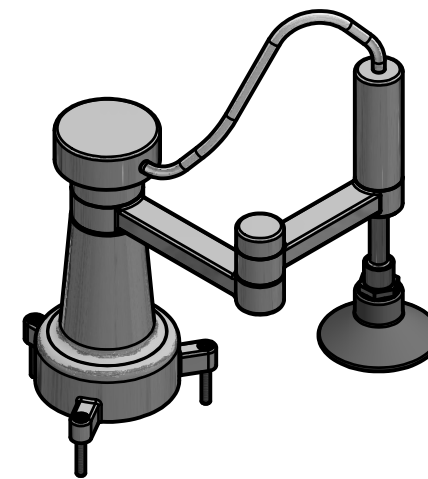


EXPLODED ASSEMBLY
SCALE 1 / 2

GENERAL NOTES:

ALL CHAMFERS ARE .02 X 45 UNLESS OTHERWISE NOTED
ALL FILLETS ARE .06in UNLESS OTHERWISE NOTED

PARTS LIST				
ITEM	QTY	PART NUMBER	MATERIAL	DESCRIPTION
1	1	BASE	ALUMINUM	
2	3	CAP SCREW	STEEL	
3	1	ARM E01	ALUMINUM	
4	1	ARM E02	ALUMINUM	
5	1	BASE CAP	ALUMINUM	
6	1	ELBOW CAP	ALUMINUM	
7	1	SLIDING TUBE SHAFT	STEEL	
8	1	SLIDING TUBE TOP	STEEL	
9	1	VACUUM CAP	ALUMINUM	
10	1	VACUUM CUP	RUBBER	
11	1	VACUUM CONNECTOR	STEEL	
12	1	VACUUM LINE	RUBBER	INNER .125 OUTER .25 LENGTH 8



ROBOTIC ARM ASSEMBLY
SCALE 1 / 4

LEGEND:

- ∅ DIAMETER
- R RADIUS
- ° DEGREES
- ∇ DEPTH
- ┌ COUNTERBORE



DIGITAL DESIGN
GRAPHICS
TECHNOLOGY

WWW.DDGT.NET



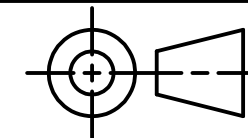
Ebeling Engineering

Nicholas Ebeling
Drafter

707-333-7096

n.b.ebeling@gmail.com

www.ddgt.net/StudentPages/nebeling



TOLERANCES UNLESS SPECIFIED:

DECIMAL INCHES:

X = ±.020

XX = ±.010

XXX = ±.005

FRACTIONAL ±1/64"

ANGLES ±1 DEGREE

SURFACES 32 ✓

COURSE: DDGT 241

INVENTOR DRAWING NAME:
ROBOTIC ARM

FIG #: 10-58

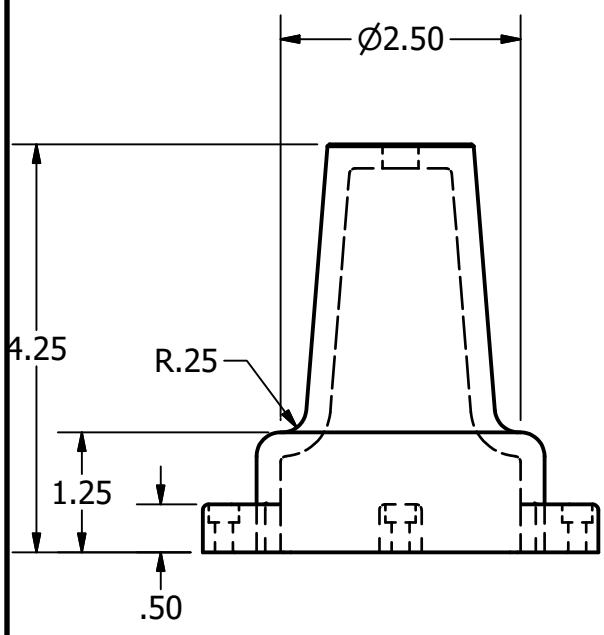
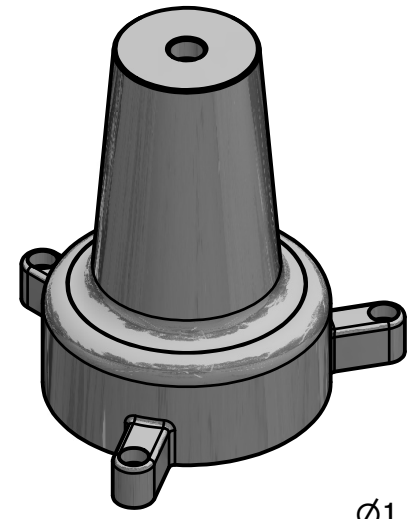
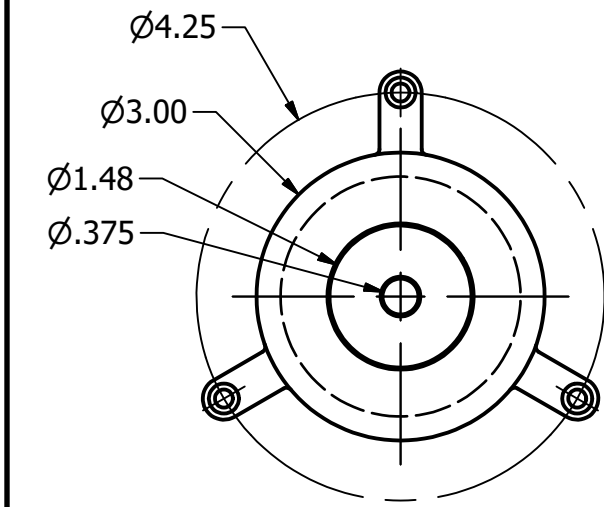
DRAFTER: N. EBELING

DATE: 2/22/2021

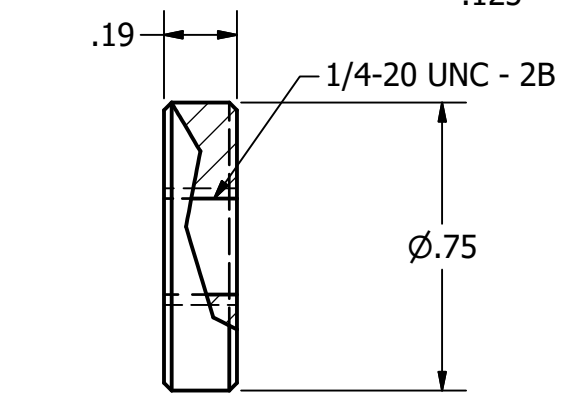
SCALE: AS NOTED

PAGE #: 1 OF 4

PARTS LIST		
ITEM	QTY	PART NUMBER
1	1	BASE
3	1	ARM E01
4	1	ARM E02
8	1	SLIDING TUBE TOP

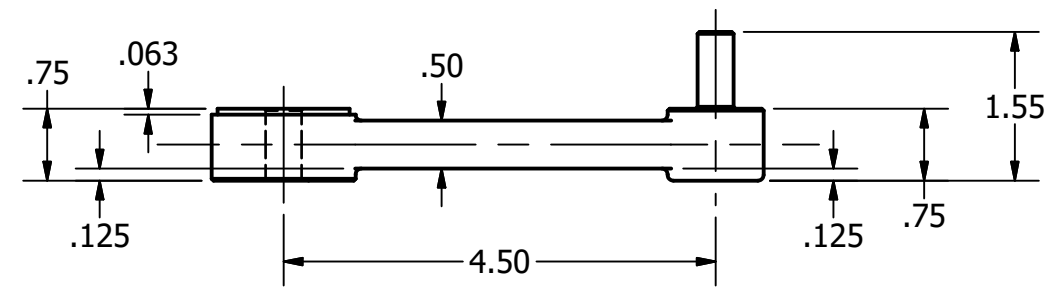
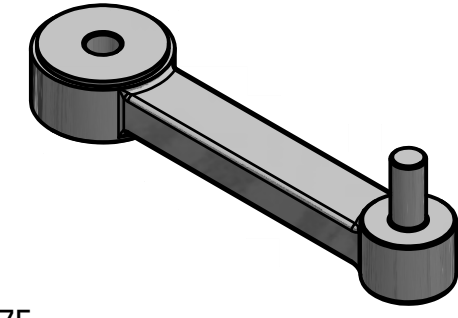
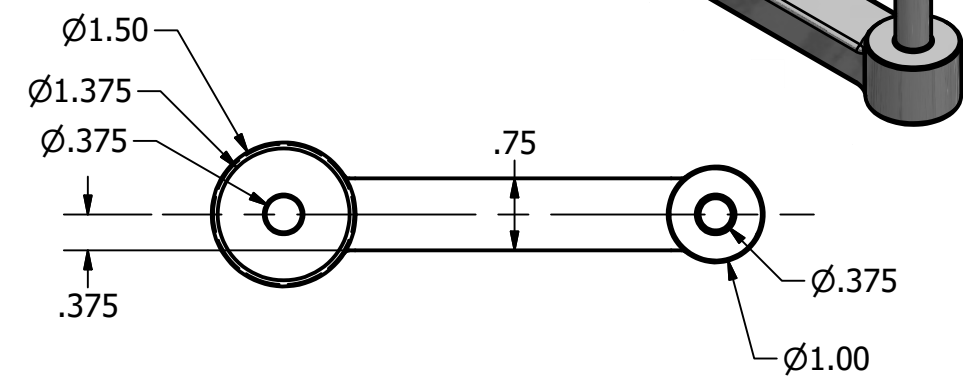


BASE
SCALE 1 / 2

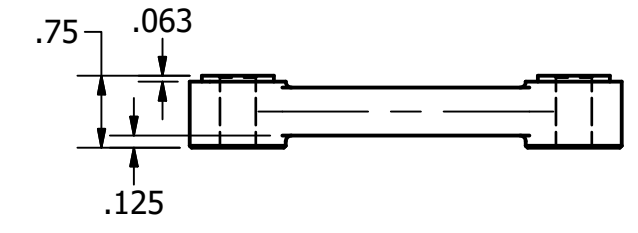
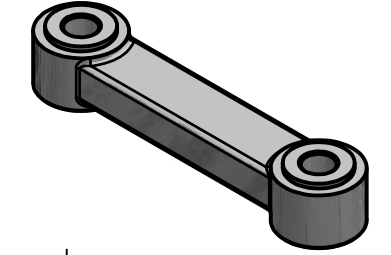
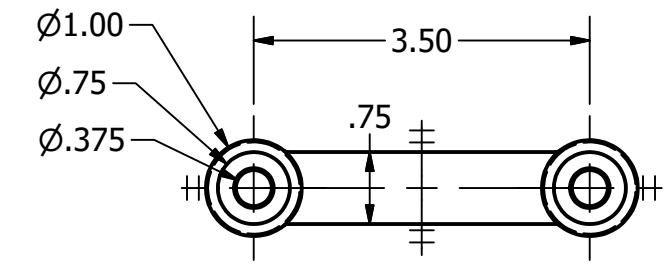


SLIDING TUBE TOP
SCALE 2 : 1

GENERAL NOTES:
 ALL CHAMFERS ARE .02 X 45 UNLESS OTHERWISE NOTED
 ALL FILLETS ARE .06in UNLESS OTHERWISE NOTED



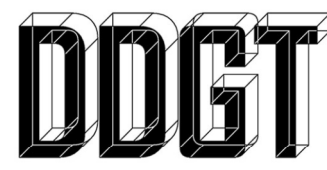
ARM E01
SCALE 1 / 2



ARM E02
SCALE 1 / 2

LEGEND:

- Ø DIAMETER
- R RADIUS
- ° DEGREES
- ∇ DEPTH
- COUNTERBORE



DIGITAL DESIGN
 GRAPHICS
 TECHNOLOGY

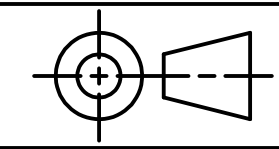
WWW.DDGT.NET



Ebeling Engineering

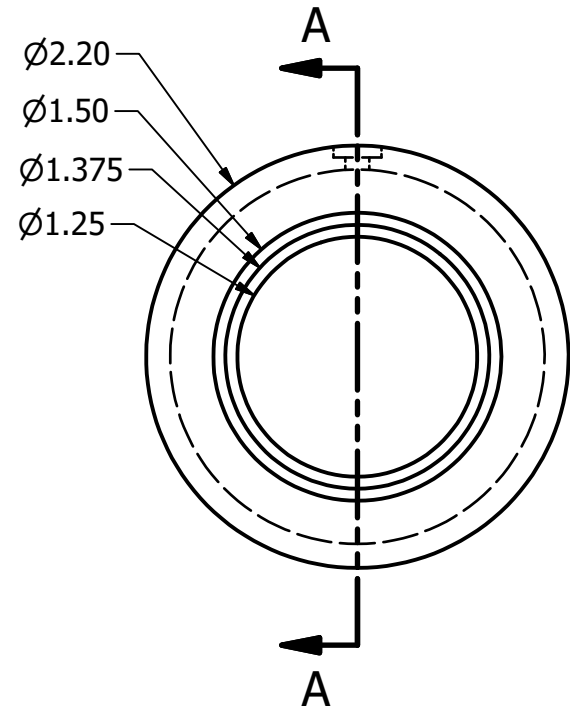
Nicholas Ebeling
 Drafter
 707-333-7096
 n.b.ebeling@gmail.com

www.ddgt.net/StudentPages/nebeling

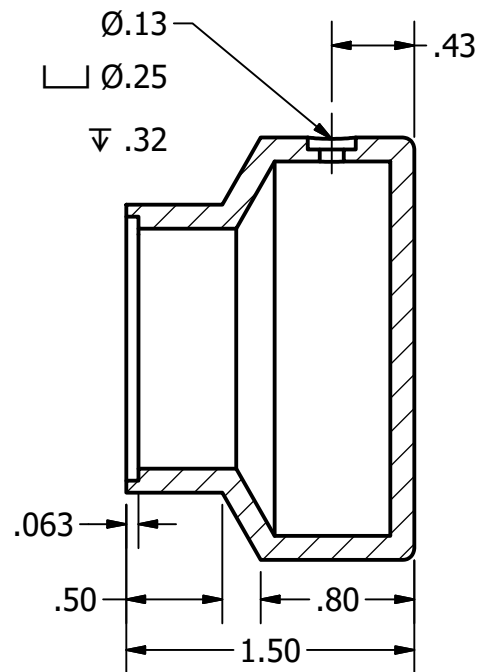


TOLERANCES UNLESS SPECIFIED:
 DECIMAL INCHES:
 X = ±.020
 XX = ±.010
 XXX = ±.005
 FRACTIONAL ±1/64"
 ANGLES ±1 DEGREE
 SURFACES 32 ✓

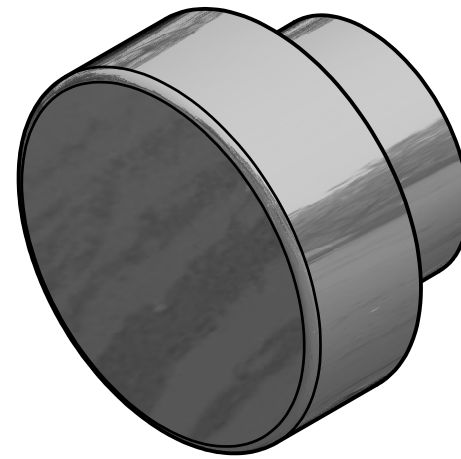
COURSE:	DDGT 241
INVENTOR DRAWING NAME:	ROBOTIC ARM
FIG #:	10-58
DRAFTER:	N. EBELING
DATE:	2/22/2021
SCALE:	AS NOTED
PAGE #:	2 OF 4



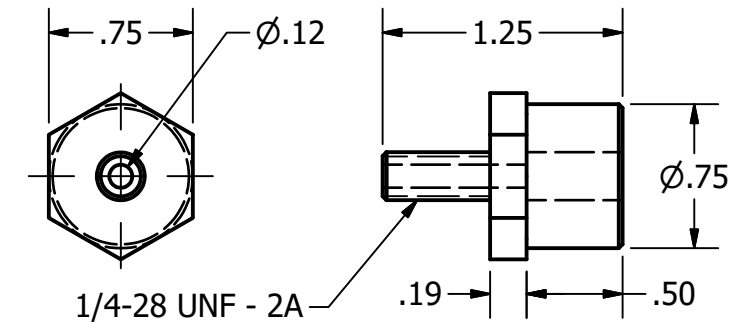
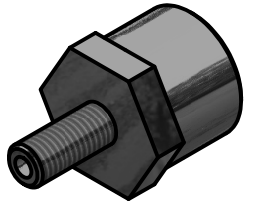
BASE CAP
SCALE 1 : 1



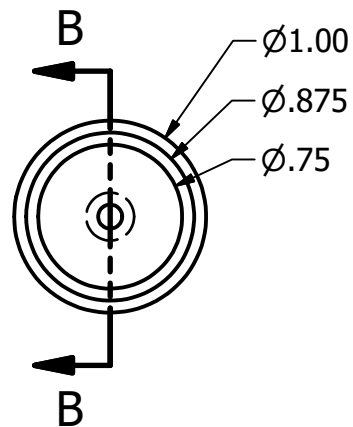
SECTION A-A
SCALE 1 : 1



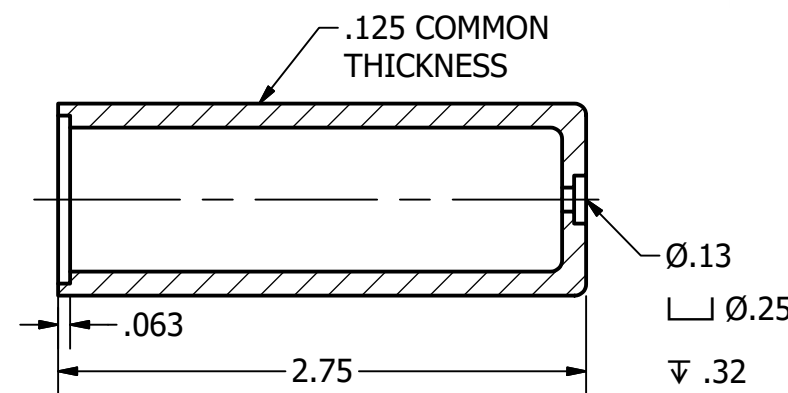
PARTS LIST		
ITEM	QTY	PART NUMBER
5	1	BASE CAP
6	1	ELBOW CAP
9	1	VACUUM CAP
11	1	VACUUM CONNECTOR



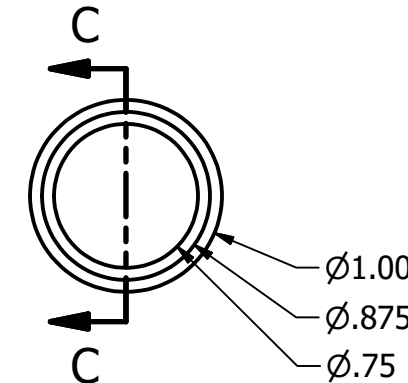
VACUUM CONNECTOR
SCALE 1 : 1



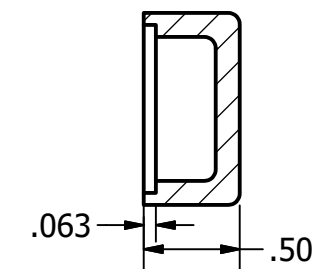
VACUUM CAP
SCALE 1 : 1



SECTION B-B
SCALE 1 : 1



ELBOW CAP
SCALE 1 : 1



SECTION C-C
SCALE 1 : 1



LEGEND:

- Ø DIAMETER
- R RADIUS
- ° DEGREES
- ∇ DEPTH
- ┌ COUNTERBORE

GENERAL NOTES:

ALL CHAMFERS ARE .02 X 45 UNLESS OTHERWISE NOTED
ALL FILLETS ARE .06in UNLESS OTHERWISE NOTED



DIGITAL DESIGN
GRAPHICS
TECHNOLOGY

WWW.DDGT.NET



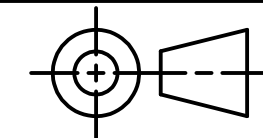
Ebeling Engineering

Nicholas Ebeling
Drafter

707-333-7096

n.b.ebeling@gmail.com

www.ddgt.net/StudentPages/nebeling



TOLERANCES UNLESS SPECIFIED:
DECIMAL INCHES:
X = ±.020
XX = ±.010
XXX = ±.005
FRACTIONAL ±1/64"
ANGLES ±1 DEGREE

SURFACES 32 ✓

COURSE: DDGT 241

INVENTOR DRAWING NAME:
ROBOTIC ARM

FIG #: 10-58

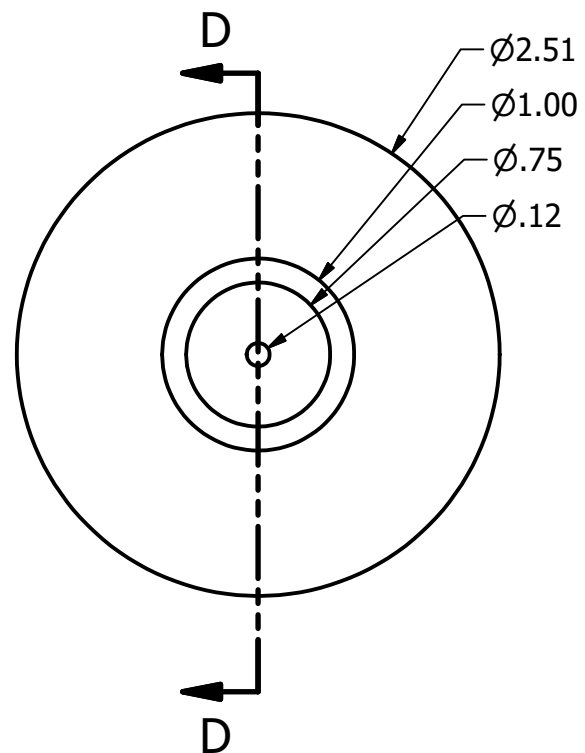
DRAFTER: N. EBELING

DATE: 2/22/2021

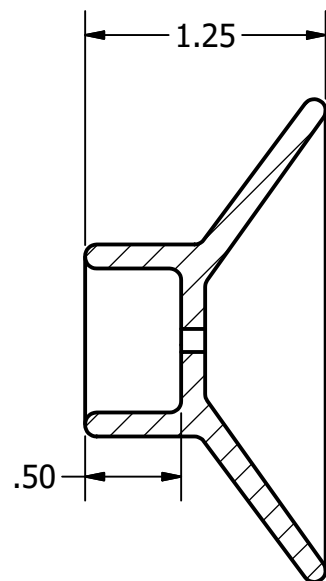
SCALE: AS NOTED

PAGE #: 3 OF 4

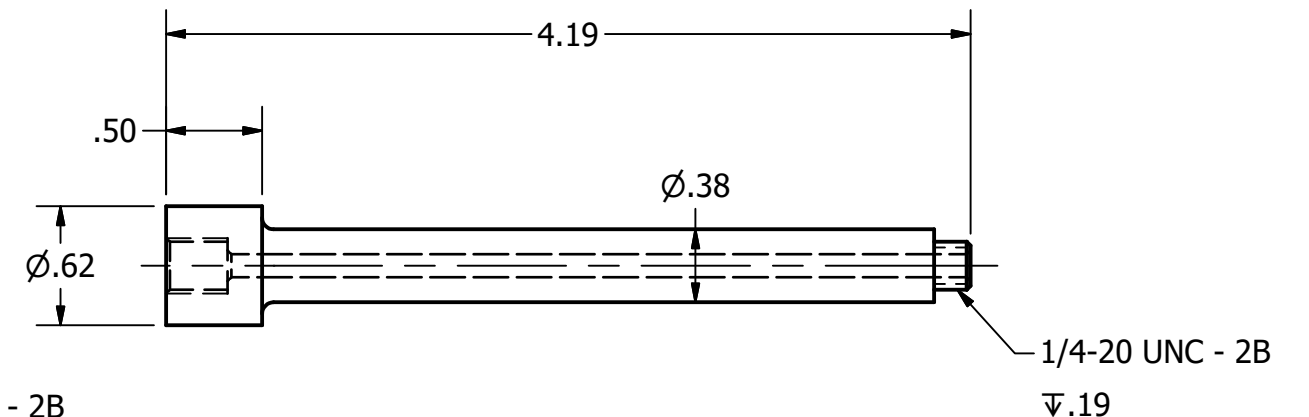
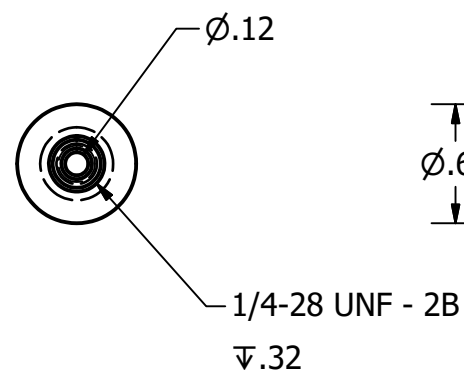
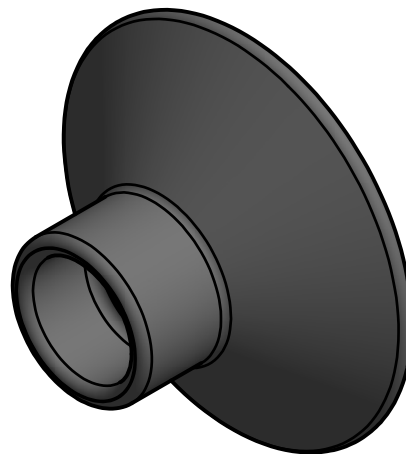
PARTS LIST		
ITEM	QTY	PART NUMBER
7	1	SLIDING TUBE SHAFT
10	1	VACUUM CUP



VACUUM CUP
SCALE 1 : 1



SECTION D-D
SCALE 1 : 1



SLIDING TUBE SHAFT
SCALE 1 : 1

LEGEND:

- Ø DIAMETER
- R RADIUS
- ° DEGREES
- ∇ DEPTH
- ┌ COUNTERBORE

GENERAL NOTES:

ALL CHAMFERS ARE .02 X 45 UNLESS OTHERWISE NOTED
ALL FILLETS ARE .06in UNLESS OTHERWISE NOTED



DIGITAL DESIGN
GRAPHICS
TECHNOLOGY

WWW.DDGT.NET



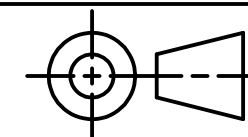
Ebeling Engineering

Nicholas Ebeling
Drafter

707-333-7096

n.b.ebeling@gmail.com

www.ddgt.net/StudentPages/nebeling



TOLERANCES UNLESS SPECIFIED:
DECIMAL INCHES:
X = ±.020
XX = ±.010
XXX = ±.005
FRACTIONAL ±1/64"
ANGLES ±1 DEGREE

SURFACES 32 ✓

COURSE: DDGT 241

INVENTOR DRAWING NAME:
ROBOTIC ARM

FIG #: 10-58

DRAFTER: N. EBELING

DATE: 2/22/2021

SCALE: AS NOTED

PAGE #: 4 OF 4